



ABOUT THE PRESENTER

Leo Lambert
Vice President & Technical
Director, EPTAC



eptac
webinar series

What Does “The Lead is Discernible” Really Mean?



ABOUT THE PRESENTER

Leo Lambert
Vice President & Technical
Director, EPTAC



eptac
webinar series

Discernible, the Definition

discernible

[dih-sur-nuh-buh l, -zur-]

adjective

1. capable of being discerned; distinguishable.

Also, **discernable**

<http://dictionary.reference.com/browse/Discernible>



ABOUT THE PRESENTER

Leo Lambert
Vice President & Technical
Director, EPTAC



Discernible, the Definition

discernible

- *Adjective*
- **1.** Capable of being seen:
perceivable, perceptible, seeable, viewable, visible, visual.
- **2.** Capable of being noticed or apprehended mentally:
 - appreciable, detectable, distinguishable, noticeable, observable, palpable, perceivable, perceptible, ponderable, sensible.

<http://www.thefreedictionary.com/discernible>



ABOUT THE PRESENTER

Leo Lambert
Vice President & Technical
Director, EPTAC



eptac
webinar series

Where is it used in 610?

Mentioned

- **19 times in chapter 6**
- **19 times in chapter 7**
- **3 times in chapter 8**
- **5 times in chapter 10**
- **4 times in chapter 12**

- **For a total of 50 times in IPC-A-610 and 6 times in J-STD-001**



ABOUT THE PRESENTER

Leo Lambert
Vice President & Technical
Director, EPTAC



eptac
webinar series

How is the word used in 610

Discernible is used:

- Looking for wire strands after tinning
- Looking for wires in solder joints on terminals
- End of wires in slotted terminal
- Evidence of film residues
- Evidence of markings



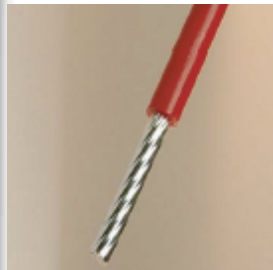
ABOUT THE PRESENTER

Leo Lambert
Vice President & Technical
Director, EPTAC

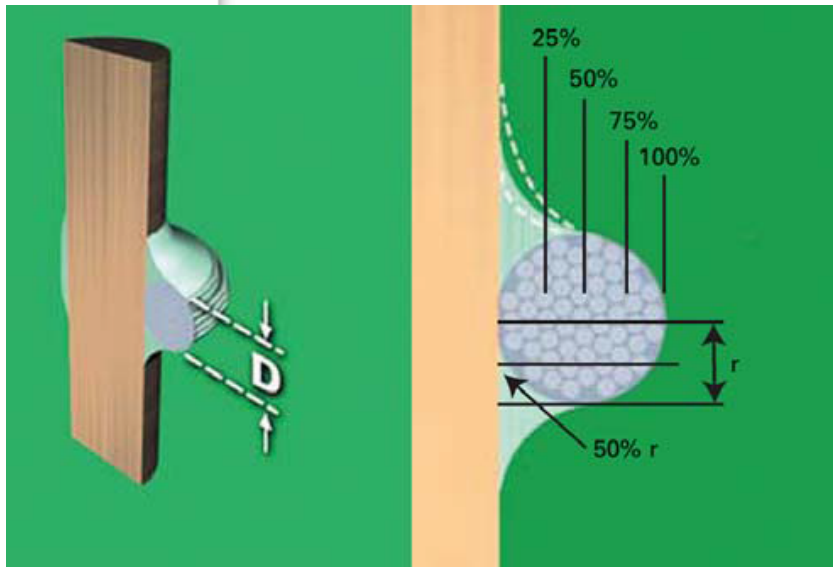


eptac
webinar series

Usage examples in 610



The tinning leaves a smooth coating of solder and the outline of the strands are discernible.



Solder wets the wire/lead and terminal and forms a discernible fillet feathering out to a smooth edge.



ABOUT THE PRESENTER

Leo Lambert
Vice President & Technical
Director, EPTAC



eptac
webinar series

Usage examples in 610



Lead outline is discernible, smooth flow of solder on wire and terminal.



Lead or wire extends completely through slot and is discernible on the exit side.



ABOUT THE PRESENTER

Leo Lambert
Vice President & Technical
Director, EPTAC



eptac
webinar series

Usage examples in 610



Solder in the bend radius is not cause for rejection provided the lead is properly formed and the topside bend radius is discernible.



Lead not discernible due to excess solder, but is it visible on the left hand solder joint.



ABOUT THE PRESENTER

Leo Lambert
Vice President & Technical
Director, EPTAC



eptac
webinar series

Usage examples in 610



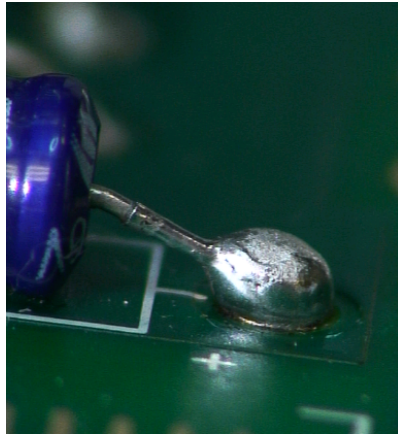
Wire contour or end is discernible in the solder connection.



ABOUT THE PRESENTER

Leo Lambert
Vice President & Technical
Director, EPTAC

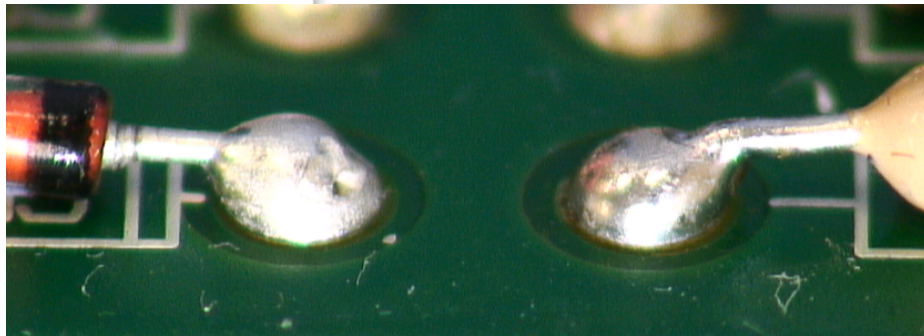
1



2



4



3



5



eptac
webinar series



ABOUT THE PRESENTER

Leo Lambert
Vice President & Technical
Director, EPTAC

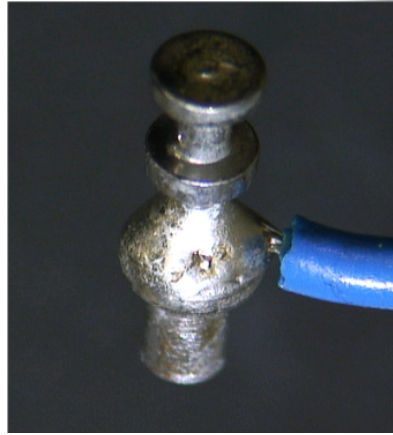


eptac
webinar series

1



2



3



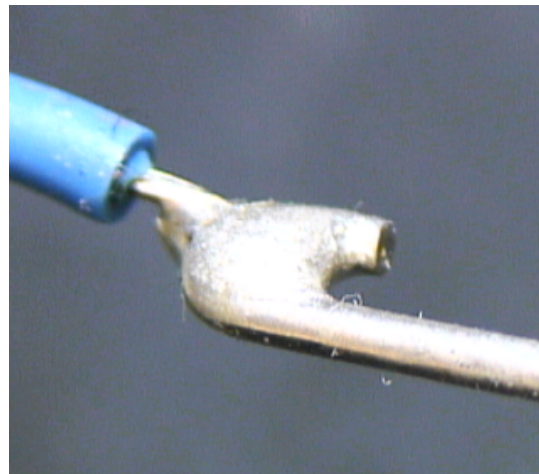
4



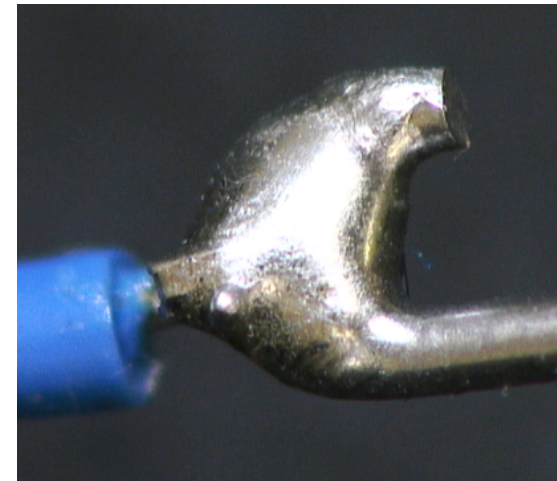


ABOUT THE PRESENTER

Leo Lambert
Vice President & Technical
Director, EPTAC



1



2



ABOUT THE PRESENTER

Leo Lambert
Vice President & Technical
Director, EPTAC



eptac
webinar series

Thank You
Any Questions?



ABOUT THE PRESENTER

Leo Lambert
Vice President & Technical
Director, EPTAC



Further Information

For questions regarding this webinar, please contact
Leo Lambert at leo@eptac.com or call at
800-643-7822 ext 215

For information on any of EPTAC's or IPC's
Certification Courses, please visit our website at
<http://www.eptac.com>

For ease of getting the EPTAC website,
We now have an APP
get our APP at
www.Eptacapp.com