



ABOUT THE PRESENTER

**Leo Lambert**  
Vice President & Technical  
Director, EPTAC



**eptac**  
webinar series

# 2016 IPC Midwest

## "Updates on Industry Changes in IPC Standards and Certification Training"



ABOUT THE PRESENTER

**Leo Lambert**  
Vice President & Technical  
Director, EPTAC



## Topics of Interest

### Ongoing activities in the specifications

1. 001, 610, 620, 7711/7721, 6012 etc
2. Updates on the New Revision 5 .1 Policy and Procedures, the document and the slides.
3. New test boards for the 7711/7721 document
4. Psychometrics development of questions for exams.



ABOUT THE PRESENTER

**Leo Lambert**  
 Vice President & Technical  
 Director, EPTAC



# J-STD-001/610

- The 001 and 610 are being handled as one major comment document, which encompasses both documents and the synergy items.
- There are 546 comments on 270 pages.

15	357	620 Synergy A-Team	1.2 <i>Added Jun 16</i>	1.2 <i>Added Jun 16</i>		Add the following to "Purpose."  Standards may be updated at any time, including with the use of amendments. The use of an amendment or newer revision is not automatically required. The revision in effect shall [D1D2D3] be as specified by the User.	Align with 620 to let readers know that Amendments may exist and would apply.	Modify to strike the last sentence.  Standards may be updated at any time, including with the use of amendments. The use of an amendment or newer revision is not automatically required.  24/12 Carries 9/26/16
501	295	Pat Kane, Jim Daggett, Jim Saunders Raytheon	10.5.1 d Staking – Glass Bodied components 3 <sup>rd</sup> sentence  <i>Added Jan 16</i>		E	<b>From:</b> Staking material fillet shall [N1D2D3] extend between 50% and 100% of the component length. <b>To:</b> Both staking fillets shall [N1D2D3] extend between 50% and 100% of the component length.	Since staking material is to be applied to both sides of the component, there are two fillets that have a fillet height requirement, thus the word "fillet" should be plural.	<i>Leaders agree with the recommendation. Max 16</i>



ABOUT THE PRESENTER

**Leo Lambert**  
Vice President & Technical  
Director, EPTAC



## WHMA-IPC-620

- 400 pages and 106 comments
- Ballot is out for 620 Rev. C and getting ready for release within Q1 of 2017
- Information can be found on KAVI
  - <https://ipc.kavi.com>
- Includes new terms and definitions, rewrite of Sections 1, 5, 14, 17, 19, 20



ABOUT THE PRESENTER

**Leo Lambert**  
Vice President & Technical  
Director, EPTAC



# 7711/7721

- The Ballot document is out for comments
- Deadline for submitting ballots/comments was Friday, Dec 2, 2016
- Document can be found on KAVI,  
<https://ipc.kavi.com>
- Arrows in the rework procedures are either up or down describing the type of rework procedure being conducted.
  - **Up arrow means removal and a down arrow means installing.**



ABOUT THE PRESENTER

**Leo Lambert**  
Vice President & Technical  
Director, EPTAC



**eptac**  
webinar series

## IPC-6012

- Rev D was issued September 2015
- Work is beginning to verify 6012 corresponds to the new 600 document.



ABOUT THE PRESENTER

**Leo Lambert**  
Vice President & Technical  
Director, EPTAC



# Policy and Procedures Rev 5.1

- Section 5, Training and Certification Programs: added requirement - all CITs and MITs must indicate agreement to the P & Ps through the portal
- Section 6.4, IPC Authorized (Licensed) Training Center / Authorized Trainers: added requirements for individual trainers
- Section 6.4.2, 6.4.2.1 & 6.4.2.2, Public and Private Center Rights and Obligations: new
- Section 6.8, Certified IPC Specialist (CIS) and Certified Interconnect Designers (CID and CID+): added section defining mandatory modules for each program



ABOUT THE PRESENTER

**Leo Lambert**  
Vice President & Technical  
Director, EPTAC



# Policy and Procedures Rev 5.1

- Section 7.5, Recertification: added requirement for CIT to teach at least 1 class per year in order to be eligible for a Recertification or Challenge test.
- It is the CIT's responsibility not the training company's to verify their eligibility before signing up to take a class.
- Section 8.2, Required Course Materials: added CIS materials; added - training materials cannot be used by anyone other than a currently certified MIT or CIT





ABOUT THE PRESENTER

**Leo Lambert**  
Vice President & Technical  
Director, EPTAC



# Policy and Procedures Rev 5.1

- Section 10.1, CIT Lecture Based - Distance Learning: added allowance for an in person, test proctor if a certified MIT is available by live connection
- Section 10.3, CIS Lecture Based – Distance Learning: added allowance for an in person, test proctor if a certified MIT or CIT is available by live connection



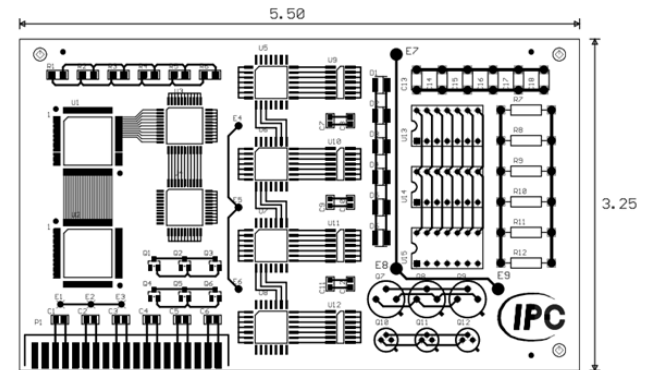
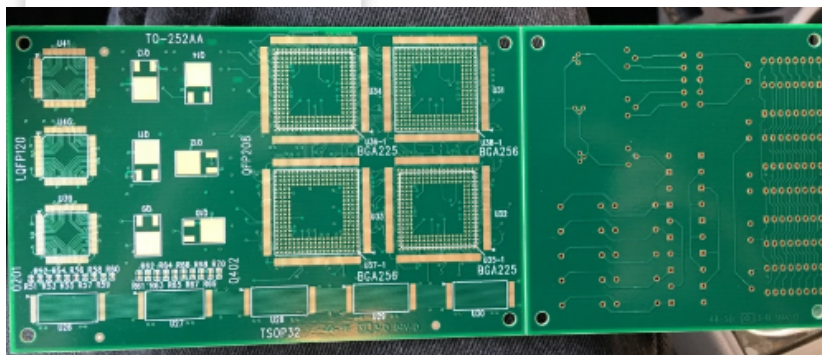
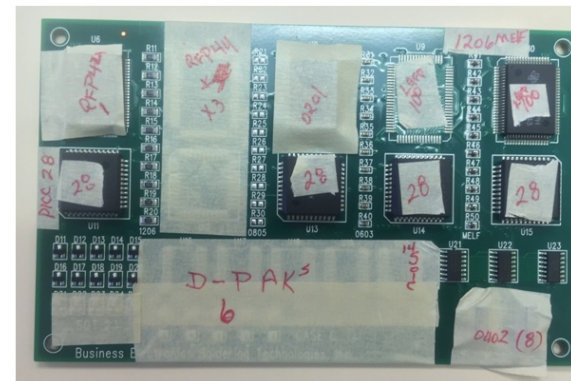
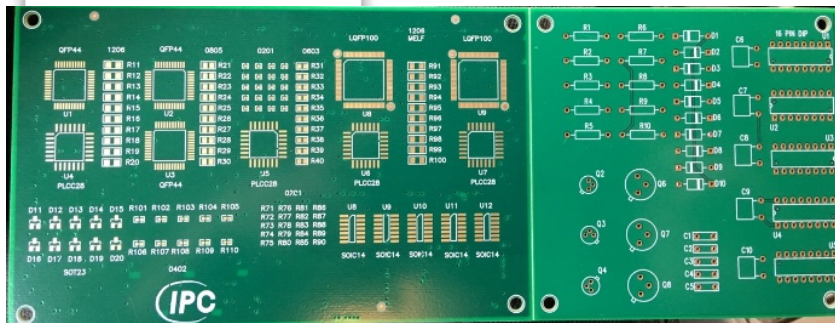
**eptac**  
webinar series



**ABOUT THE PRESENTER**

**Leo Lambert**  
Vice President & Technical  
Director, EPTAC

# Test Board for 7711/7721





ABOUT THE PRESENTER

**Leo Lambert**  
Vice President & Technical  
Director, EPTAC



## IPC Programs

- **IPC Essentials** Provides the IPC standards fundamentals your employees need.
- **IPC EDGE is available online 24/7** from your desktop, laptop or tablet—you learn on your schedule ... not ours.  
<https://edge.ipc.org/>



ABOUT THE PRESENTER

**Leo Lambert**  
Vice President & Technical  
Director, EPTAC



**eptac**  
webinar series

# Psychometrics What is it?

GAMES | BROWSE THESAURUS | WORD OF THE DAY | VIDEO | WORDS A

**Merriam-Webster** SINCE 1828

psychometrics

DICTIONARY | THESAURUS

## psychometrics

*noun plural but singular in construction* | psy·cho·met·rics | \-'me-triks\  
Popularity: Bottom 40% of words

### Definition of PSYCHOMETRICS

: the **psychological** theory or technique of mental measurement

---

See **words that rhyme with psychometrics**



ABOUT THE PRESENTER

**Leo Lambert**  
Vice President & Technical  
Director, EPTAC



## Key Psychometric Components for a Certification Program

The purpose and goal of this training module is to apply general *psychometric* principles to the IPC certification programs.



ABOUT THE PRESENTER

**Leo Lambert**  
Vice President & Technical  
Director, EPTAC



## Key Psychometric Components for a Certification Program

According to legal and professional guidelines<sup>1</sup>, if a test is used to certify employees the test must be:

- ***valid*** and
- ***reliable***



ABOUT THE PRESENTER

**Leo Lambert**  
Vice President & Technical  
Director, EPTAC



## Key Psychometric Components for a Certification Program - Validity

- What is meant by test **validity**?
  - Does the test measure what it is supposed to measure? Does a passing score really relate to whether the person can perform the job (or aspects of the job) effectively?



ABOUT THE PRESENTER

**Leo Lambert**  
Vice President & Technical  
Director, EPTAC



**eptac**  
webinar series

## Bottom Line

- We are going to learn how to write questions that are better designed, to make sure the questions are:
  - Valid
  - Defensible
  - Reliable
- This will help with any audits and tracking of issues with the information in the text and how the programs are being delivered





ABOUT THE PRESENTER

**Leo Lambert**  
Vice President & Technical  
Director, EPTAC



**eptac**  
webinar series

**Thank You**  
**Any Questions?**



ABOUT THE PRESENTER

**Leo Lambert**  
Vice President & Technical  
Director, EPTAC



## Further Information

For questions regarding this webinar, please contact  
Leo Lambert at [leo@eptac.com](mailto:leo@eptac.com) or call at  
800-643-7822 ext 215

For information on any of EPTAC's or IPC's  
Certification Courses, please visit our website at  
<http://www.eptac.com>

For ease of getting the EPTAC website,  
We now have an APP  
get our APP at  
[www.Eptacapp.com](http://www.Eptacapp.com)